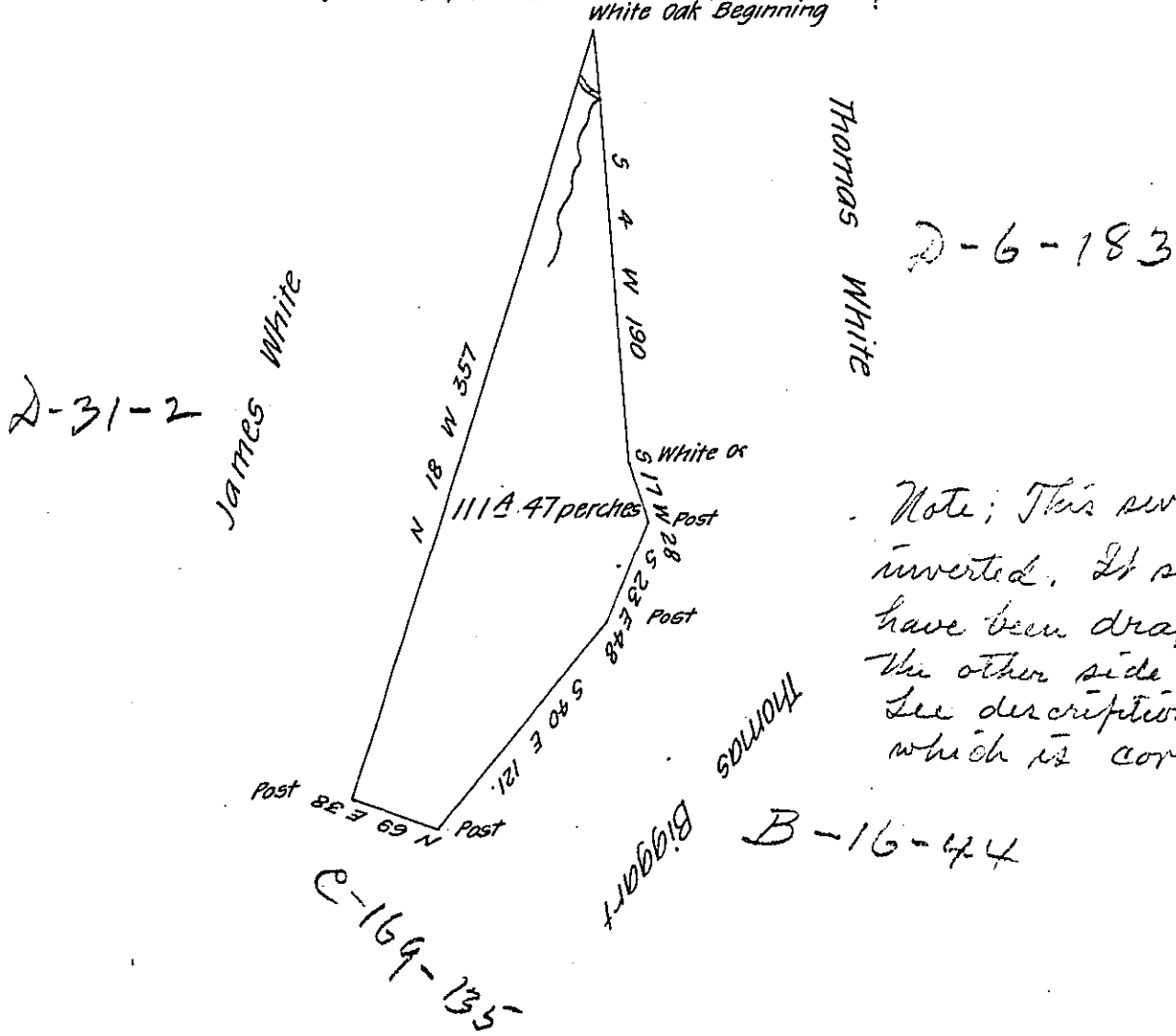


Copy as if page was turned over
and then through page Book



Note; This survey is
inverted. It should
have been drafted on
the other side of page.
See description in Patent
which is correct.

A draught of a tract of Land surveyed the 15th day of October
1802 by virtue of a Warrant granted to Thomas White for 100 acres of land
dated the 28th day of August 1793 Situate in Robison Township Washington
County on the Potatoe Garden Run Called Potatoe flat Containing one hundred and
eleven acres and forty seven Perches with the usual allowance of six p^r Cent
for Roads &c.

Jonathan Leet D.S.

To Samuel Cochran Esquire
Surveyor General of Pennsylvania

IN TESTIMONY that the above is a copy of the original remaining on file in
the Department of Internal Affairs of Pennsylvania, made
conformably to an Act of Assembly approved the 16th day of
February, 1833, I have hereunto set my Hand and caused
the Seal of said Department to be affixed at Harrisburg,
this seventh day of June 1907

Henry Horck

Secretary of Internal Affairs.